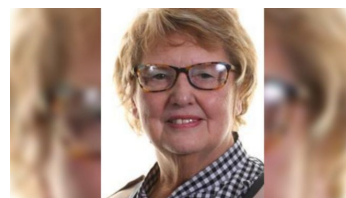


Park Community Action News



Summer 2020

REMEMBERING PAT



It was with great sadness that we reported the death of our Chair, Councillor Patricia Midgley on March 29th 2020, following her infection with Covid 19. We will be erecting a memorial plaque in an appropriate location in Park Centre and holding a special commemorative event when circumstances allow.

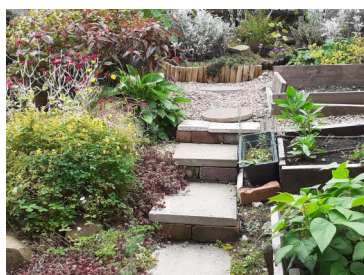
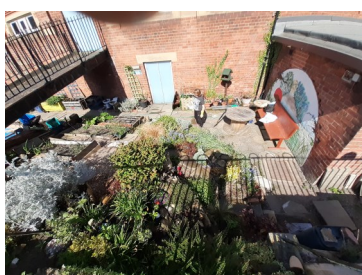
Our Covid 19 Response



When our normal activities ceased, our staff and a small team of volunteers, including Jane Smith, Holly DeBois, Dave & Josie Ansell, focussed on responding to the impact of the pandemic on our local community. Our Pantry, aiming to help those in food poverty, was needed more than ever while contact was maintained with all our regular users, by telephone calls to offer practical help to reduce their social isolation. Instead of collection, food and household goods were delivered to the most vulnerable pantry users and families with children in need.



Our **Community Garden** and allotment on Manor Fields were lovingly tended throughout by volunteers, as you can see in these photographs. Huge thanks must go to Marion Harris, Sharon Wiggett, Joe Bussey and family for their work here



Moving Forward

During lockdown we suffered a considerable loss of income, especially from room bookings, which could have impacted on our ability to survive as an organisation. Fortunately a number of funders assisted with grant aid sufficient to cover some of our losses and the extra costs of our Covid 19 response.

In addition to the invaluable support we have had over many years from the Tudor Trust, Sheffield City Council, the Guinness Group and Manor and Castle Development Trust we have to acknowledge additional crisis funding from central government, via **The National Lottery**



The South Yorkshire Community Foundation

Hallam FM Cash For Kids



Tesco Bags of Help

And **Sport England**



We do not know yet when our normal activities will be able to safely resume and the Centre and Library will reopen, but it will certainly not be before September. Our sports hall is currently being fully used as a packing and distribution hub for the Healthy Holidays project.

We are aware that the needs and priorities of our community may have changed over the course of the pandemic and we want to know how we can best respond to these changes. With this in mind we aim to set up a meeting with PCA neighbourhood Forum in September to identify what are the most valued uses of our centre and facilities, what sort of activities and timings are most popular and whether we are accurately reflecting the interests of our whole community. Full details of arrangements for this meeting, whether it will be virtual or actual will be circulated and widely advertised as soon as possible.